



**MITSUBISHI  
ELECTRIC**

PRESENTATION PRODUCTS

# XD110U

XGA DLP™ PROJECTOR



## Exceptional Performance at an Affordable Cost.

This ultra-portable projector features native XGA resolution, 1700 ANSI lumens, a 2000:1 contrast ratio, and only weighs 5.5 pounds. With a 4000 hour lamp life, this DLP™ projector provides bright, high quality data and video images. The XD110U also includes Mitsubishi's exclusive ERA warranty program, so you can rest assured of your XD110U projection needs.



The XD110U offers exceptional performance, reliability and quality all at an affordable price, making it a winning choice for your projection needs.

- DLP™ technology
- Native XGA (1024x768) resolution
- 1700 ANSI lumens and a contrast ratio of 2000:1
- Up to 4000 hours lamp life
- Lightweight at only 5.5 lbs
- 3-year warranty

# XD110U

## XGA DLP™ PROJECTOR

TOP VIEW



BACK VIEW



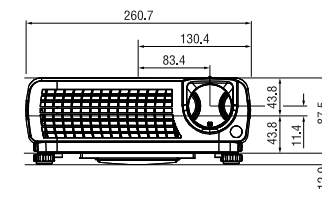
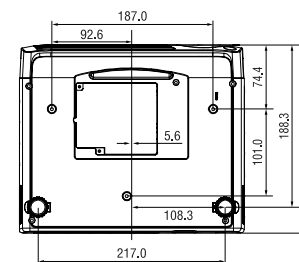
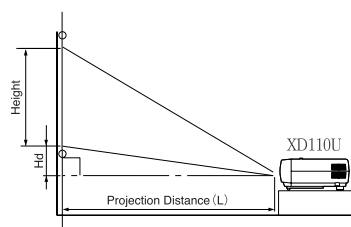
SIDE VIEW



FRONT VIEW

<b>DISPLAY TECHNOLOGY</b>	0.55", 1-Chip DMD, 12 deg. DDR, DDP2000	
<b>RESOLUTION</b>	1024 x 768 (Total 786,432 pixels), 550 Video Lines, 1280 x 1024 Compressed	
<b>BRIGHTNESS</b>	1700 ANSI Lumens	
<b>CONTRAST RATIO</b>	2000 : 1	
<b>ZOOM/FOCUS</b>	Manual Focus & Zoom Lens	
<b>PROJECTION LENS</b>	F= 2.4 (Wide) 100" @3.2 m (Wide)	
<b>THROW RATIO</b>	1.56 - 1.87	
<b>OFF SET AXIS</b>	7.9 : -1 up	
<b>PICTURE SIZE</b>	40-300 (Diagonal) inch	
<b>SOURCE LAMP</b>	200W (Shut Off Time 2000 Hrs) with Low Mode (160W: Shut Off Time 4000 Hrs)	
<b>PC COMPATIBILITY</b>	Resolution: 640 x 480 - 1024 x 768 + Compressed 1280 x 1024 Sync on Green available	
<b>VIDEO COMPATIBILITY</b>	NTSC/NTSC 4.43/PAL (including PAL-M, N) /SECAM/PAL-60, Component Video: 480i/p (525i/p), 576i/p (625i/p), 720p (750p), 1080i (1125i 60Hz), 1080i (1125i 50Hz)	
<b>INPUT TERMINALS</b>	RGB:	Mini D-sub 15pin x 1
	Audio:	Stereo Mini Jack (ø 3.5mm) x 1
	Video:	RCA x 1 + S-VIDEO x 1
<b>OUTPUT TERMINAL</b>	RGB:	Mini D-sub 15pin x 1
	Audio:	Stereo minijack (ø 3.5mm) x 1
<b>COMMUNICATION TERMINAL</b>	USB terminal for Page Up/Down mouse control	
<b>SCANNING RATE</b>	[H] 15 - 80 kHz, [V] 50 - 85 Hz, [Dot Clock] max 110 MHz	
<b>AUDIO SPEAKER</b>	2 W Mono	
<b>HEIGHT ADJUSTER</b>	Rear tilt leg x 2	
<b>HAND REMOTE UNIT</b>	Power Point™ Page Up/Down via USB	
<b>POWER CONSUMPTION</b>	280W	
<b>DIMENSION</b>	10.27 x 8.58 x 3.43 inches (L x W x H)	
<b>WEIGHT</b>	5.5 lbs.	
<b>POWER REQUIREMENTS</b>	AC 100-240V, 50/60 Hz	
<b>FAN NOISE</b>	34 dBA (Low mode: 29 dBA)	
<b>SUPPLIED ACCESSORIES</b>	<ul style="list-style-type: none"> <li>• Soft carrying bag x 1</li> <li>• Remote control x 1 (with 2 batteries)</li> <li>• Power cable (2.9m), US x 1, EU x 1, UK x 1</li> <li>• VGA (D-sub) cable x 1</li> <li>• Composite cable (1.8m) x 1</li> <li>• Owner's manual (CD-ROM) x 1</li> <li>• Safety manual x 1</li> <li>• Quick start manual x 1</li> </ul>	
<b>OPTIONAL ACCESSORIES</b>	<ul style="list-style-type: none"> <li>• Lamp (VLT-XD110LP)</li> <li>• Wheeled ATA-Approved Shipping Case (XD10-ATAC)</li> <li>• Ceiling Mount (PROJ-UCM)</li> <li>• Learning remote control (R-SC1)</li> </ul>	
<b>WARRANTY</b>	3-Years Parts & Labour, 90 days on lamp 3-Years Express Replacement Assistance (ERA)	

SCREEN					DISTANCE FROM SCREEN (L)				Hd		
Diagonal Size		Width		Height		Max.Zoom		Min.Zoom		inch	m
inch	cm	inch	cm	inch	cm	inch	m	inch	m	inch	m
40	102	32	81	24	61	50	1.3	60	1.5	3.5	8.8
60	152	48	122	36	91	76	1.9	91	2.3	5.2	13.3
80	203	64	163	48	122	101	2.6	121	3.1	7.0	17.7
100	254	80	203	60	152	126	3.2	151	3.8	8.7	22.1
150	381	120	305	90	229	189	4.8	227	5.8	13.1	33.2
200	508	160	406	120	305	252	6.4	302	7.7	17.4	44.2
250	635	200	508	150	381	315	8.0	378	9.6	21.8	55.3
300	762	240	610	180	457	378	9.6	-	-	26.1	66.3



Unit measured in millimeters (mm)



**MITSUBISHI DIGITAL ELECTRONICS AMERICA, INC.**  
 Presentation Products Division  
 Toll Free: 888.307.0349  
 Email: ppinfo@mdea.com  
[www.mitsubishi-presentations.com](http://www.mitsubishi-presentations.com)

Canada  
 Mitsubishi Electric Sales Canada Inc.  
 Information Technologies Group  
 Phone: 905.475.7728  
[www.MitsubishiElectric.ca](http://www.MitsubishiElectric.ca)



©2005 Mitsubishi Digital Electronics America, Inc. Standard features, options and specifications subject to change without notice. The DLP™ logo and DLP™ medallion are trademarks of Texas Instruments. Microsoft, Windows, and the Windows logo are registered trademarks of Microsoft Corporation. Mac and the Mac logo are trademarks of Apple Computer, Inc, registered in the U.S. and other countries. All other trademarks are the property of their respective holders.  
 \*The projector lamp contains mercury. Please dispose of properly.

PP20061-07/05-15M-LITXD110U